

RT Data Help

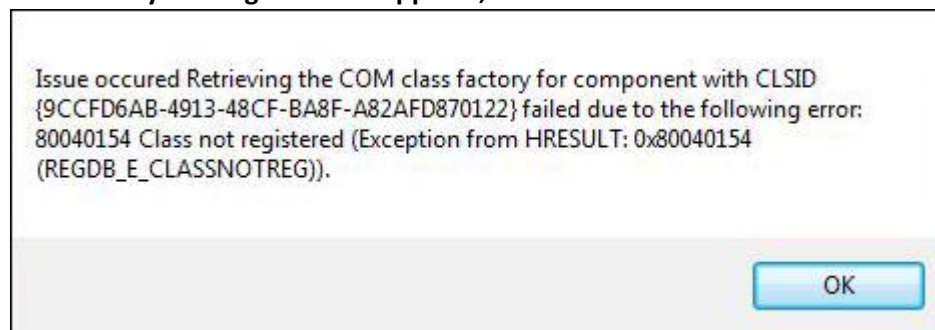
How to Install RT Data

- Download RT Data Setup from Website
- Run downloaded setup file (If OS is Win-7, Win-8 and Win-Vista, Right Click on RTSetup.exe and Chose Run as Administrator)
- RT Data Setup Dialogue will Start.
- Click on Next .
- Accept License Terms by Selecting Button and Click on Next .
- Change the location of RT Data Setup (Recommended to keep it Unchanged) and Click on Next .
- Now RT Data Setup is ready to install. Click on Install .
- Wait for few moments while RT Data is installed.
- On Completion of Installation Click on Finish .
- Now you are ready to use RT Data.

Register RT Data on First Run

- Run RT Data from Start Menu OR Desktop Icon.
- It will open Registration dialogue
- Fill your Name, Email Id and Mobile Number
- Select No. of Days for Trial
- Select Feeds for which Trial required. If the feed you require for trial is not available for Section, please contact Live Support or call Help Line Numbers.
- Now Click on ACTIVATE Button. Registration Success Message will appear. Close This Dialogue Box. Registration process is over.

Note : If any Message like this appears;

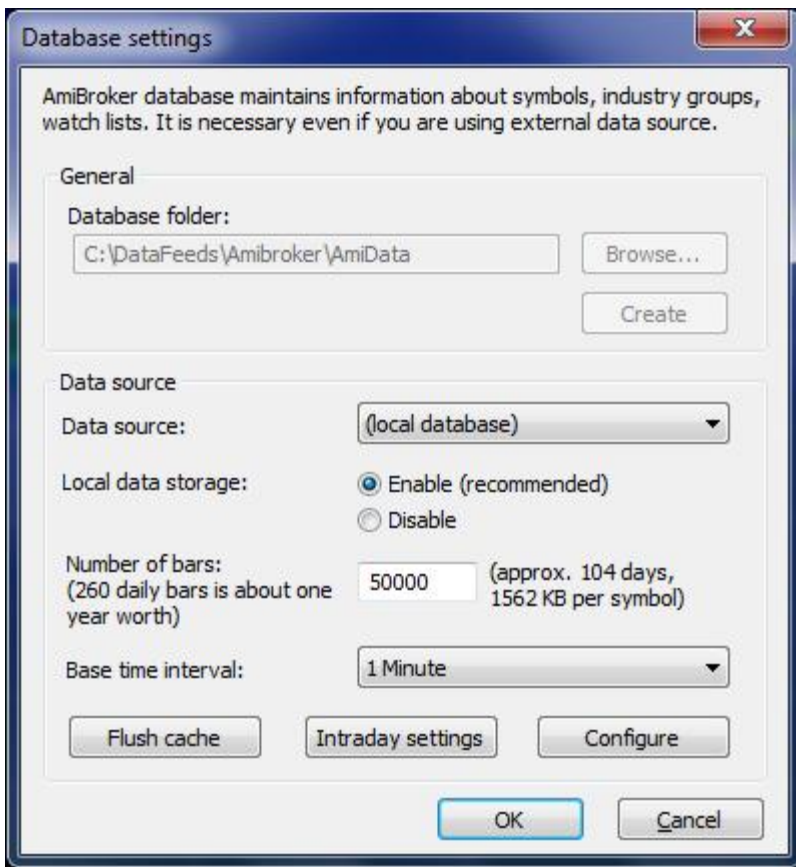


Then use the following steps:

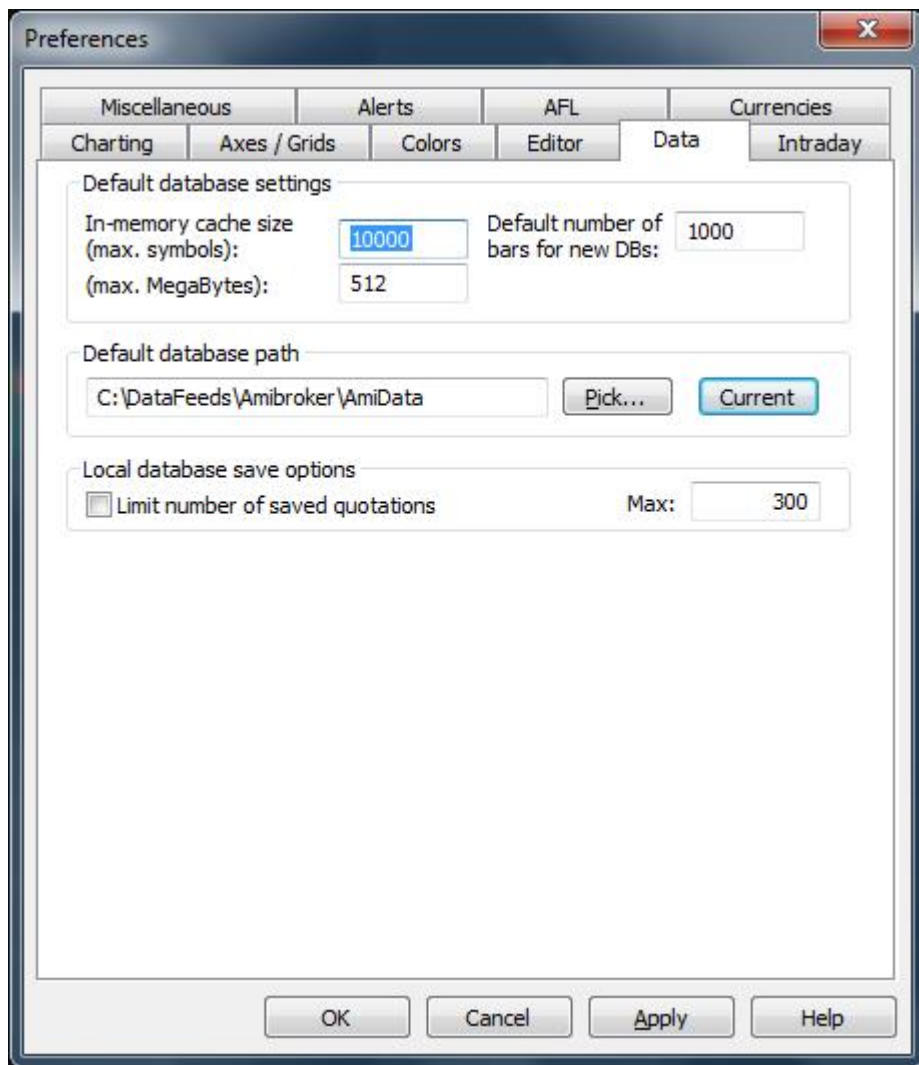
- Go to Folder where RT Data Setup has been installed.
- Normally it is 'C:\Program Files\RT Data' OR 'C:\Program Files (x86)\RT Data'
- Right Click on 'Feed Server.Exe' File and Click on 'Properties'
- Select 'Compatibility' Tab
- Click on 'Change settings for all users' Button at the Bottom.
- Select the Box 'Run this program as an administrator' at the Bottom.
- Click 'OK' and click 'Ok' again.
- Run RT Data again, now the above Error will not appear.

Start RT Data - First Time Settings

- RT Data will open Default Amibroker Software automatically, if installed.
- If Amibroker install and run, on Menu Bar Click on File > Database Settings and ensure the settings as given in Example given below and Click 'OK'



- Now on Menu Bar Click on Tools > Preferences and Select 'Data' Tab. On Following Dialogue Box click on 'Current' Button to make Default Database path and click 'Ok'.



- Close RT Data, it will also Close Amibroker. Now Start RT Data again and you are ready to start.
- Select 'Amibroker' Check Box if you have licensed version of Amibroker. If you are using Amibroker Trial Version, then use 'AmiTrial' Checkbox. It will ensure autobackfill some data at the time of start of RT Data.
- To open Charts in Metastock, check settings below in Metastock Section.

How to Add Symbols in RT Data Watchlist

(Note : Amibroker is Started by RT Data and Do not Close Amibroker While Data or Backfill is Processing.)

- Select the Feed for which Data Required.
- Select Multiple Symbols from the Left Panel List (10 Symbols allowed during Trial and 100 Symbols during Subscription Period).
- Click Add Symbol Button. The Symbols will Appear in the Active List and Data will Start if Markets are Open.
- Select No. of Days to backfill and then Click RT Data Backfill Button. (10 days backfill allowed during trial). If 1 day selected, it will backfill current day backfill of all active symbols will be done.
- Select Number of Days for which Historical Data is Required from the Drop-down menu and click Historical Backfill Button.
- In next Dialogue Box, unselect unwanted Feeds for which backfill not required and click Ok .
- In few moments, Historical Backfill will start. (Please ensure that selected symbol numbers are less than 100)

How to Connect RT Data with Amibroker

(Note : Amibroker is Started by RT Data and Do not Close Amibroker While Data or Backfill is Processing.)

- At Start of RT Data, it will also Start Amibroker
- If using Amibroker Demo Version, then Select `AmiTrial` Checkbox. It will do partial backfill at start.
- If Amibroker is not started with RT Data, close RT Data and Start again.
- Data for Symbols Selected in RT Data will reflect in Amibroker Symbol List.
- For Manual Settings of Data :
- Ensure Creation of Folder `C:\DataFeeds\Amibroker`
- On Toolbar of Amibroker, click on `File > New > Database`
- Data Settings Dialogue Box will open.
- Type `C:\DataFeeds\Amibroker\AmiData` in `Database folder Information`
- Click on `Create Button`
- Enable Local data storage by Selecting `Button`.
- Add 50000 as Number of Bars. (If you want bulky data, it can be increased upto 100000, but it can affect the speed of data).
- Select `1 Minute` in `Base time interval`
- Click `Ok` to come out of this Dialogue box
- If this Database i.e. `C:\DataFeeds\Amibroker\AmiData` then Chose `Open Database` from File Menu

How to Make Existing Database as Default Database

- Open RT Data, it will also open Amibroker automatically
- In Amibroker, click on `Tools > Preferences`. It will open `Preferences Dialogue Box`
- Click on `Data Tab` and then Click on `Current Button`.
- Click `Ok` to Close Preferences Dialogue Box.
- Now if you open Amibroker without RT Data, it will open your Default Database

How to Save and Upload Watchlist in RT Data

- You can save your favorite multiple watchlists. This options is not available during trial.
- Add your favourite symbols in Watchlist.
- Click `Save Button`.
- Name your watchlist (e.g. `rtdata.colect`).
- Click `Save` to Exit. Your Watchlist will be saved.
- If you want to open the saved watchlist, click on `Upload Button`.
- Go to file location where watchlist (e.g. `rtdata.colect`) was saved.
- Click `Open Button`.
- Your favourite symbols saved will appear in Watchlist.

How to Backfill Intraday Data

(Note : Amibroker is Started by RT Data and Do not Close Amibroker While Data or Backfill is Processing.)

- Click on `RT Data Backfill Button`
- Select `[1]` for `Current Day Backfill` and more than `[1]` days for previous days backfill.
- Press `Backfill Button` appearing against each symbol to backfill current day s data for single symbol.

How to do EOD Backfill & Configure with Amibroker

- In RT Data click on `EOD Backfill Button`. EOD Backfill Dialogue Box will open.

- Click the Checkbox for which Feeds EOD data has to be backfilled.
- Select From and To Period for each Feed for which EOD data has to be backfilled.
- Click Start EOD Backfill Button
- Data will start backfilling and its progress can be seen at the bottom box.
- Wait for the backfilling to be finished.
- When backfilling process is finished, close RT Data and then open Amibroker again.
- On Toolbar, click on File > New > Database
- Data Settings Dialogue Box will open.
- Unselect Load this database at startup Checkbox
- Type C:\EODData in Database folder Information
- Click on Create Button
- Select Metastock® data Plug-in from Data source .
- Enable Local data storage by Selecting Button.
- Add 10000 as Number of Bars.
- Select End-of-Day in Base time interval
- Click on Configure Button
- Metastock Plug-in Dialogue Box will Open
- Unselect Intraday auto-refresh Checkbox in Options
- Click on Add folder and go to folder C:\DataFeeds\Metastock\EOD
- Note : EOD Data is stored in C Drive in Following Folders :
 - C:\DataFeeds\EOD\CM
 - C:\DataFeeds\EOD\FO
 - C:\DataFeeds\EOD\MCX
 - C:\DataFeeds\EOD\NCDEX
- Select Master From every Feed Folder and Open in Dialogue Box. Make sure that the Folders appear in the Metastock Plug-in Dialogue Box like following snapshot.
- Click on Retrieve symbols Button. Done Message will appear on right side pane.
- Click Ok to come out of this Dialogue box
- Click Ok to come out from Database Settings Dialogue box.
- All Symbols selected in EOD Data will appear in Amibroker Symbol List.

How to Resolve File not found Error

- If an Error Message appears : Issue occurred File not found! . It means that data C:\DataFeeds\Metastock is bad.
- In such instance, rename or remove C:\DataFeeds\Metastock folder.
- Run RT Data and do the backfill again.

How to Subscribe / Renew RT Data

- To subscribe for first time, make Payment for the data pack.
- Pay the amount in any of our account and fill the Subscribe Form.
- The data feed will be activated in few minutes.
- For any additional information for subscription, please contact Live Support or call at Help line numbers.
- To Renew, Click on Renew Button. It will open renewal page.
- Fill the payment information and data feed will be activated in few minutes.

How to Take Remote Support

- Click on Live Support Button on RT Data. You can also call Helpline numbers

- For providing your machine on remote for assistance, click on Ammyy Admin Button and provide Your ID to our representative.
- Your machine will be taken on remote and necessary help will be provided.

How to Open RT Data Charts in Metastock

- We assume that you have configured the RT Data and necessary backfill has been done.
- Open Metastock in Offline Mode
- Click File > Open. It will Open a Dialogue Box.
- Point to folder C:\DataFeeds\Metastock\1Min\...
- Select your Feed Folder and open the symbols which have been selected in RT Data .
- Click on Open . It will open the chart in Metastock.
- Open Metastock Refresher from Desktop
- A new application will start. Click on Cycle
- Select Button Use your own
- Change number of seconds from 10 to 3 and click Ok
- Click on Start Button. Data will start updating in Metastock.